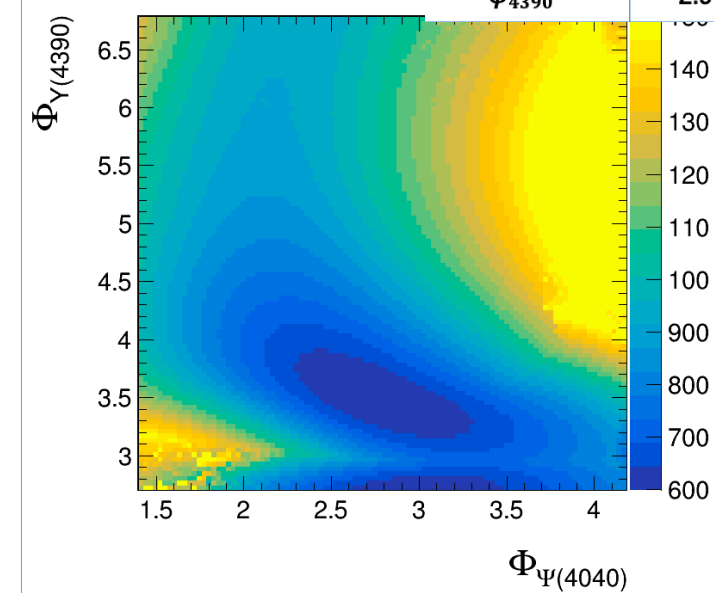
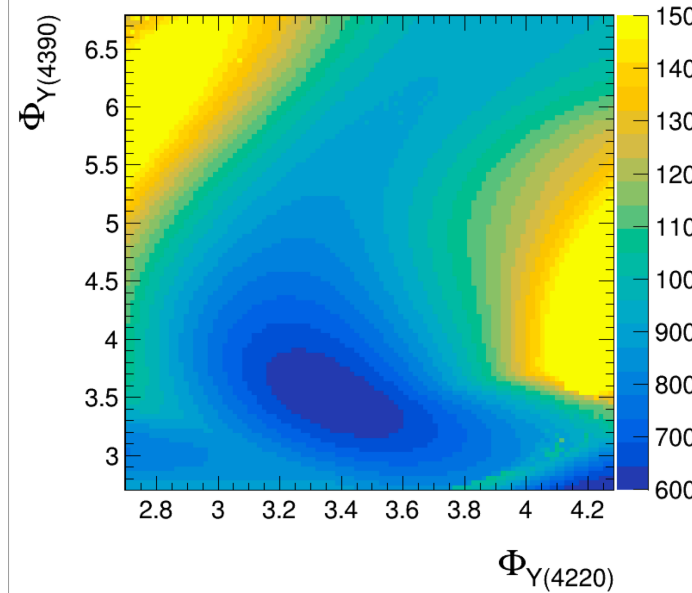
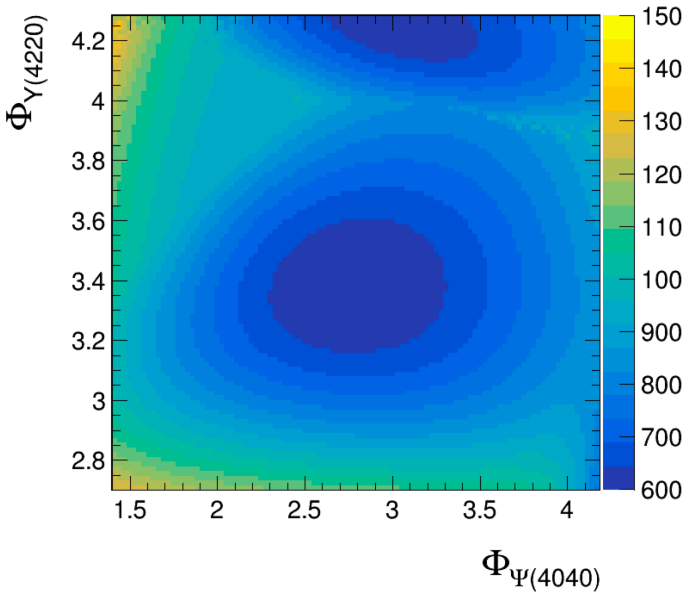
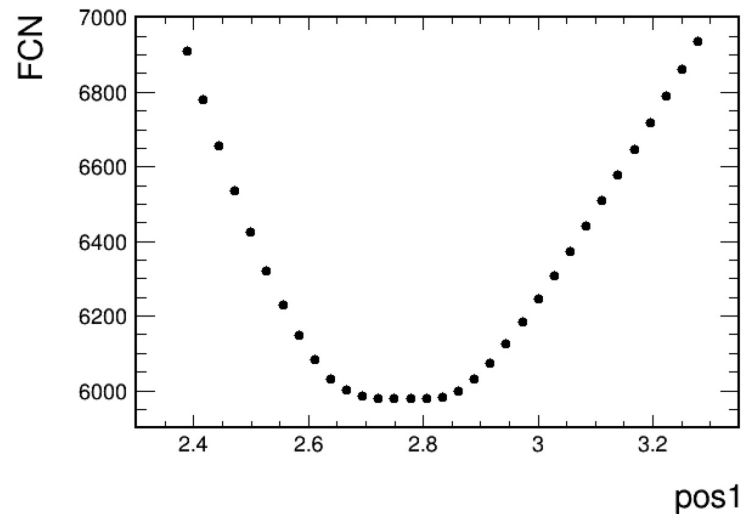


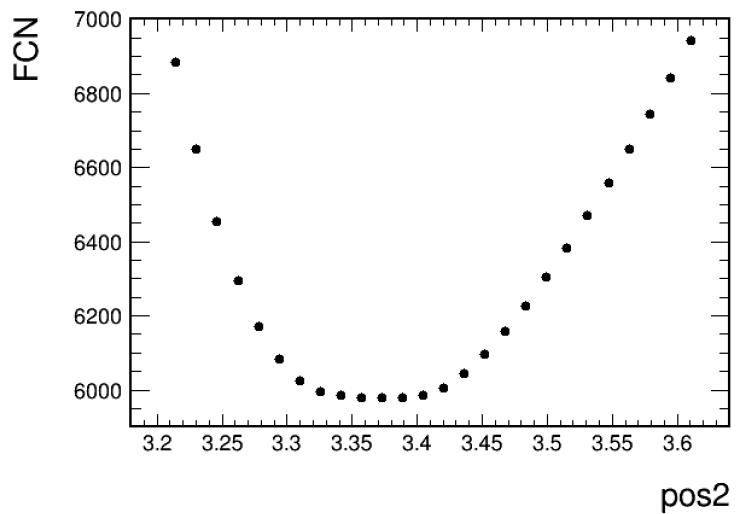
Solution	1	5
$\Gamma^{e^+e^-} B_{4040}$	1.01 ± 0.21 (1.006)	1.009
ϕ_{4040}	3.08 ± 0.58 (3.084)	3.3762 -2.907
$\Gamma^{e^+e^-} B_{4220}$	4.02 ± 0.51 (4.021)	4.037
ϕ_{4220}	-2.75 ± 0.11 (-2.751)	3.833 -2.450
$\Gamma^{e^+e^-} B_{4390}$	1.80 ± 0.57 (1.7999)	1.817
ϕ_{4390}	-2.93 ± 0.13 (-2.929)	3.663 -2.620



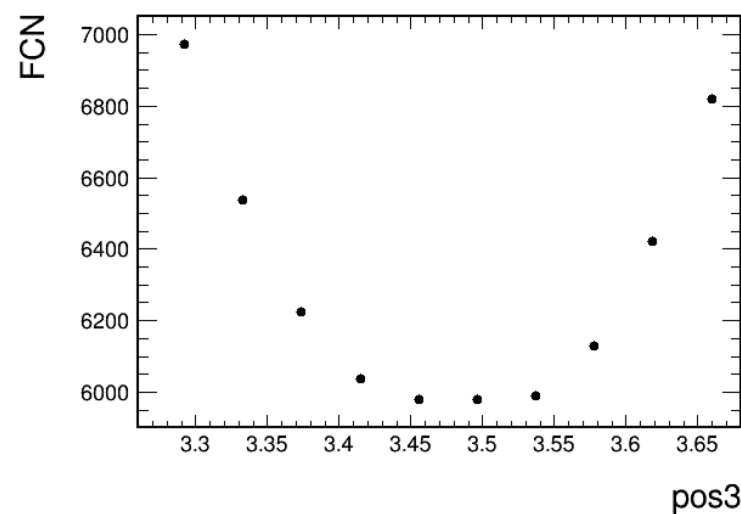
err~10^-1



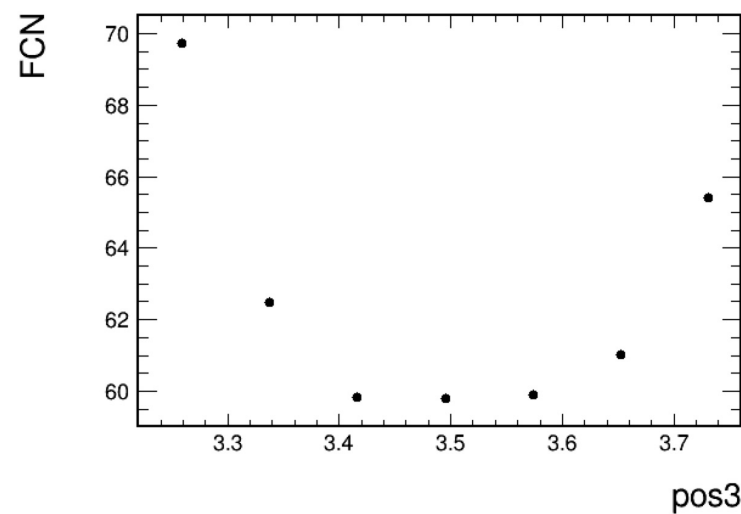
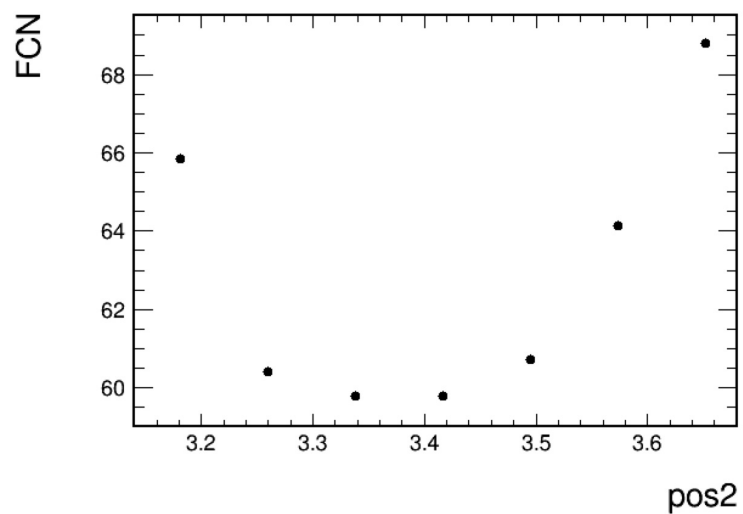
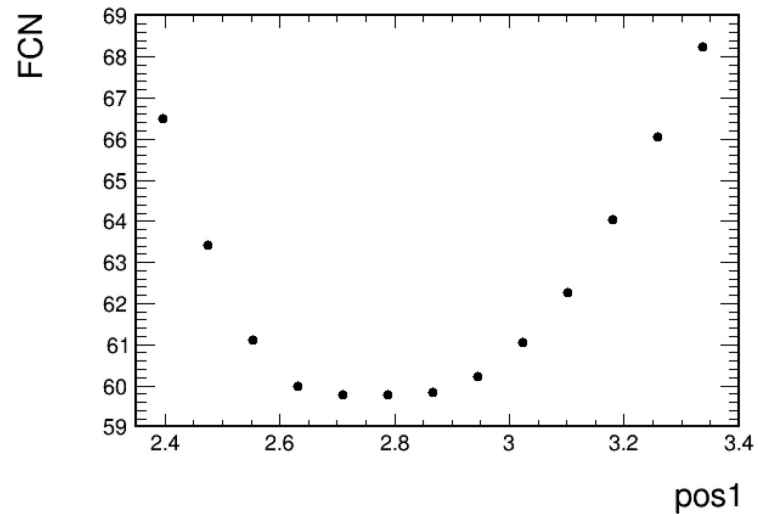
err~10^-1



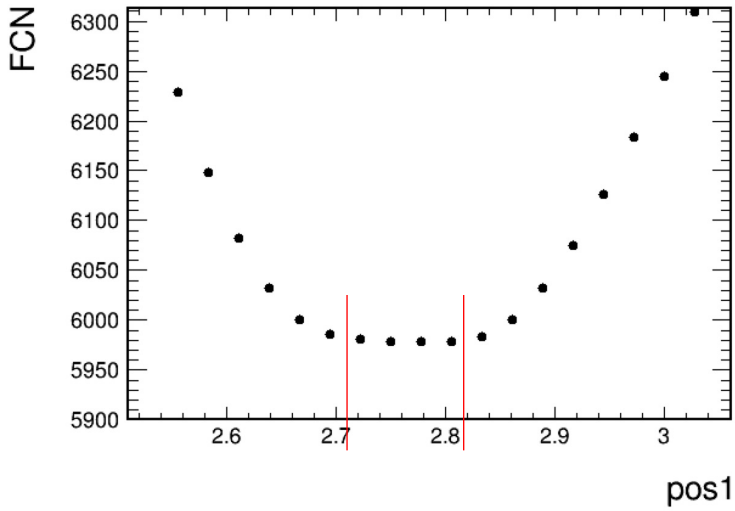
err~10^-1



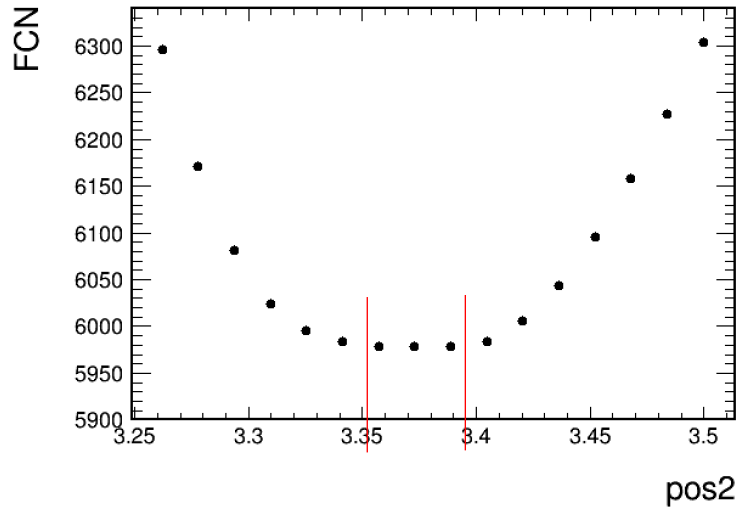
Nominal



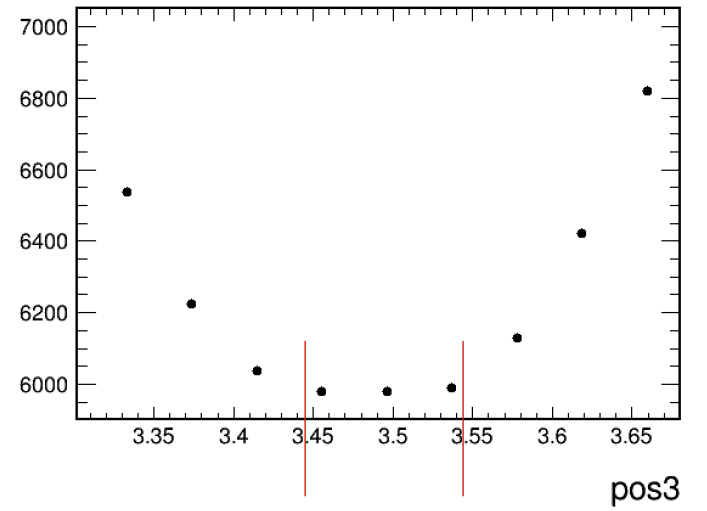
err~10^-1



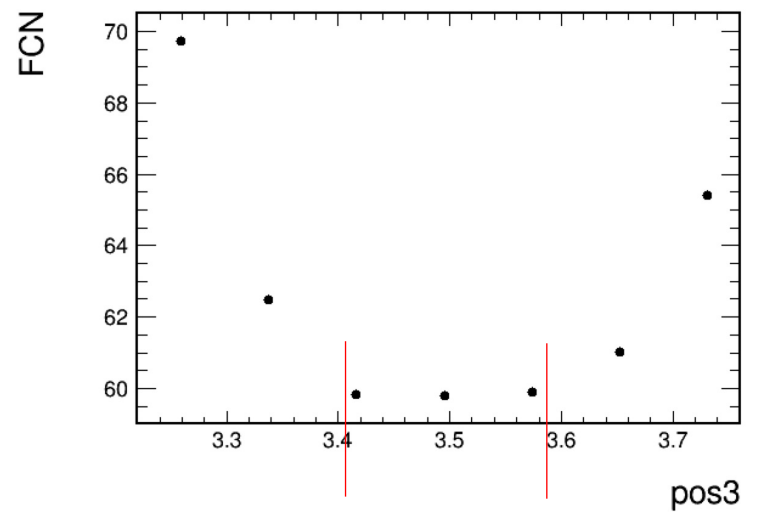
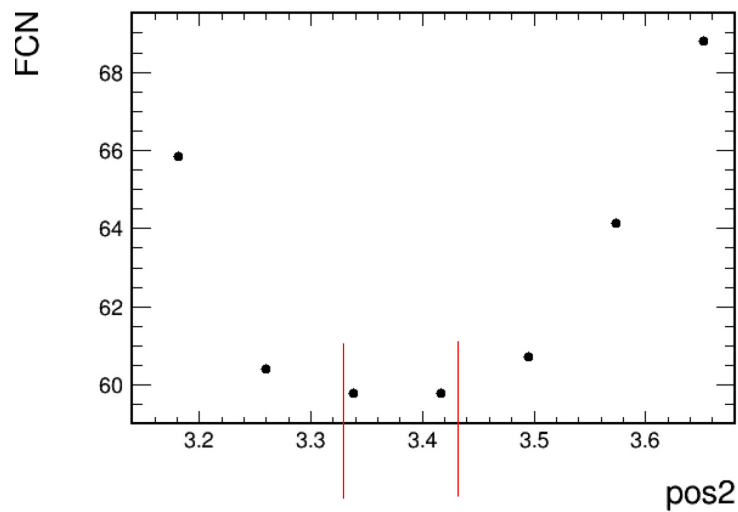
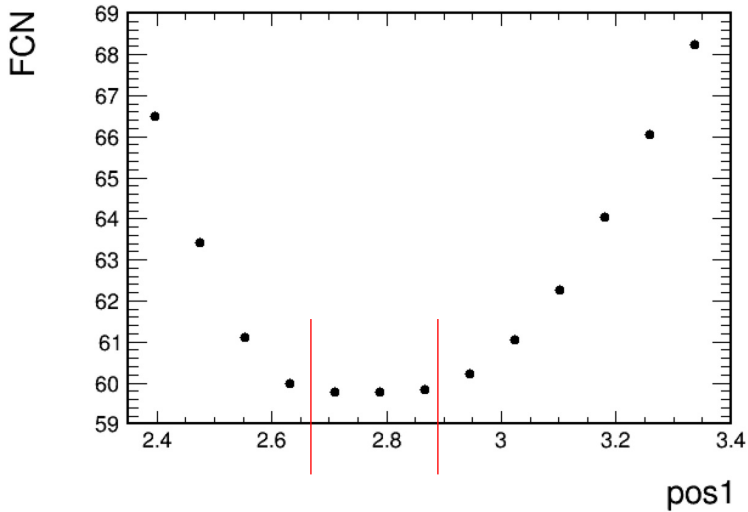
err~10^-1



err~10^-1



Nominal

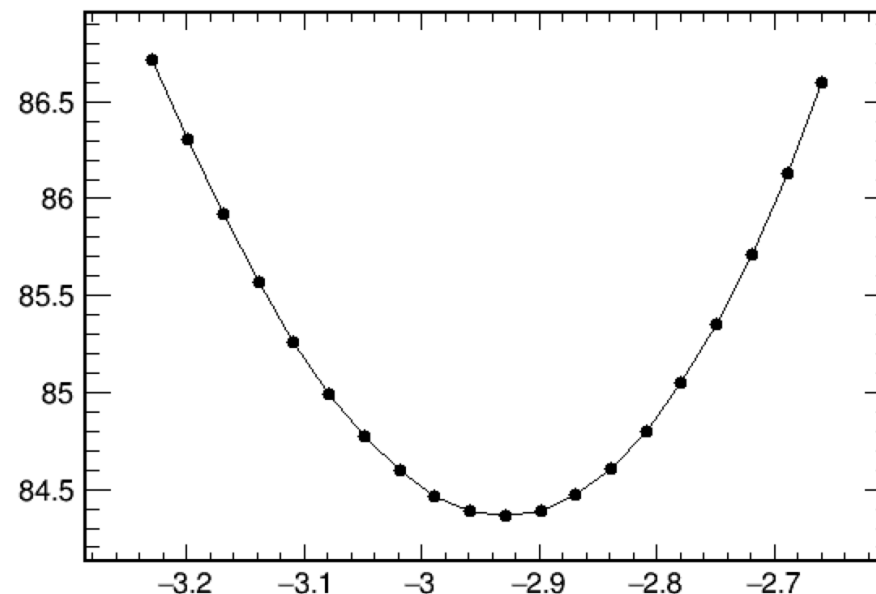


Solution	1	5	2	6
$\Gamma^{e^+e^-} \mathcal{B}_{4040}$	1.01±0.21 (1.006)	1.009	7.07±0.55 (7.077)	7.103
ϕ_{4040}	3.08±0.58 (3.084)	-2.907	-1.84±0.06 (-1.757)	-1.465
$\Gamma^{e^+e^-} \mathcal{B}_{4220}$	4.02±0.51 (4.021)	4.037	5.47±0.73 (5.488)	5.510
ϕ_{4220}	-2.75±0.11 (-2.751)	-2.450	2.86±0.16 (2.943)	-3.039
$\Gamma^{e^+e^-} \mathcal{B}_{4390}$	1.80±0.57 (1.7999)	1.817	2.09±0.68 (2.108)	2.129
ϕ_{4390}	-2.93±0.13 (-2.929)	-2.620	2.99±0.11 (3.082)	-2.892

Solution	3	7	4	8
$\Gamma^{e^+e^-} \mathcal{B}_{4040}$	1.11±0.23 (1.108)	1.112	7.78±0.62 (7.799)	7.827
ϕ_{4040}	-2.94±0.38 (-2.871)	-2.579	-1.58±0.07 (-1.430)	-1.137
$\Gamma^{e^+e^-} \mathcal{B}_{4220}$	8.71±1.02 (8.728)	8.763	11.86±1.06 (11.914)	11.962
ϕ_{4220}	-1.96±0.11 (-1.893)	-1.592	-2.64±0.15 (-2.482)	-2.181
$\Gamma^{e^+e^-} \mathcal{B}_{4390}$	4.34±1.27 (4.359)	4.401	5.04±1.48 (5.106)	5.155
ϕ_{4390}	2.80±0.12 (2.874)	-3.100	2.44±0.65 (2.601)	2.911

Solution	1	5	2	6
$\Gamma^{e^+e^-} B_{4040}$	1.01 ± 0.21 (1.006)	1.009	7.07 ± 0.55 (7.077)	7.103
ϕ_{4040}	3.08 ± 0.58 (3.084)	-2.907		
$\Gamma^{e^+e^-} B_{4220}$	4.02 ± 0.51 (4.021)	4.037		
ϕ_{4220}	-2.75 ± 0.11 (-2.751)	-2.450		
$\Gamma^{e^+e^-} B_{4390}$	1.80 ± 0.57 (1.7999)	1.817		
ϕ_{4390}	-2.93 ± 0.13 (-2.929)	-2.620		

Solution	3	7
$\Gamma^{e^+e^-} B_{4040}$	1.11 ± 0.23 (1.108)	1.112
ϕ_{4040}	-2.94 ± 0.38 (-2.871)	-2.579
$\Gamma^{e^+e^-} B_{4220}$	8.71 ± 1.02 (8.728)	8.763
ϕ_{4220}	-1.96 ± 0.11 (-1.893)	-1.592
$\Gamma^{e^+e^-} B_{4390}$	4.34 ± 1.27 (4.359)	4.401
ϕ_{4390}	2.80 ± 0.12 (2.874)	-3.100



			11.86 ± 1.06 (11.914)	11.962
			-2.64 ± 0.15 (-2.482)	-2.181
			5.04 ± 1.48 (5.106)	5.155
			2.44 ± 0.65 (2.601)	2.911

Backup

	1		2		3		4	
Mass_Psi4040(GeV)	4.0390	4.0390	4.0390	4.0390	4.0390	4.0390	4.0390	4.0390
Width_Psi4040(GeV)	0.0800	0.0800	0.0800	0.0800	0.0800	0.0800	0.0800	0.0800
Gammaee*Br(Psi4040)(eV)	1.0056	0.9362	7.0687	6.8760	1.1063	1.0338	7.7768	7.5827
Phi4040(rad)	3.0841	2.7715	-1.8372	-1.9430	3.3458	3.0203	-1.5761	-1.6947
Mass_Psi4220(GeV)	4.2197	4.2173	4.2197	4.2173	4.2197	4.2173	4.2197	4.2172
Width_Psi4220(GeV)	0.0807	0.0775	0.0807	0.0775	0.0807	0.0775	0.0807	0.0776
Gammaee*Br(Psi4220)(eV)	4.0208	3.6599	5.4747	5.1465	8.7129	7.0960	11.8595	9.9940
Phi4220(rad)	-2.7511	-2.9089	2.8583	2.5099	-1.9626	-2.1361	-2.6378	-3.0022
Mass_Psi4360(GeV)	4.3864	4.3921	4.3864	4.3920	4.3864	4.3920	4.3864	4.3916
Width_Psi4360(GeV)	0.1773	0.1170	0.1772	0.1169	0.1773	0.1170	0.1771	0.1173
Gammaee*Br(Psi4360)(eV)	1.7999	0.9196	2.0944	1.0219	4.3363	2.2578	5.0434	2.5397
Phi4360(rad)	-2.9290	-2.7953	2.9919	2.9719	2.8008	2.5876	2.4367	2.0695
p0	1.5341	2.3034	1.5407	2.3186	1.5389	2.3121	1.5501	2.3280
p1	393.9940	509.3110	393.2510	505.3810	393.4260	507.3660	392.2350	496.1820

Backup

